

65 dB

**BAUER**  
COMPRESSORS

Quality. Our DNA

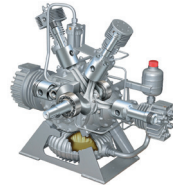
# M-SERIES™ Q

## CNG System For Medium To Large Fleets



› Simplex system shown

## FEATURES



### COMPRESSOR

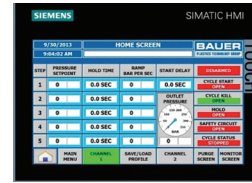
Featuring BAUER's latest state-of-the-art C23 series high inlet pressure capable, air-cooled compressor, at the heart of the system.

- › Designed for continuous duty application
- › Extremely durable and low maintenance
- › Negligible oil carryover in the PPM Range



### COST OF OWNERSHIP

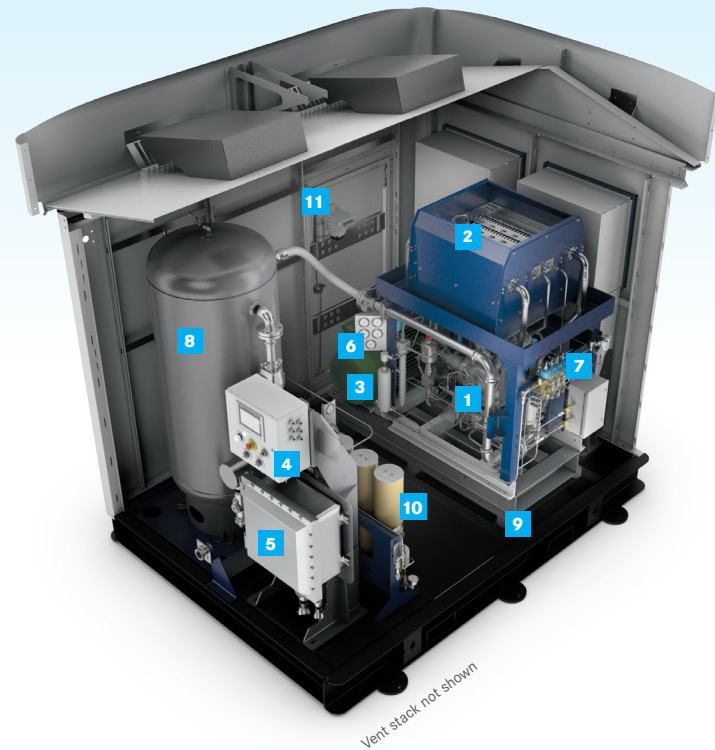
Designed for long periods between maintenance intervals and very low cost of ownership. 8000 hrs between ring changes. 30,000 hrs before major overhaul. Lifetime BAUER support.



### CONTROL SYSTEM

State-of-the-art control system and intuitive machine interface makes operating the unit simple.

- › Excellent diagnostics
- › Remote interface via smartphone option
- › Online manual and operating / maintenance instructions standard



- 1 BAUER C23 AIR-COOLED COMPRESSOR
- 2 COMPRESSOR HEAT EXCHANGERS
- 3 HIGH EFFICIENCY TEFC MOTOR
- 4 NEMA 4 PLC CONTROL PANEL WITH TOUCH SCREEN OPERATOR INTERFACE AND EMERGENCY STOP BUTTON
- 5 NEMA 7 ELECTRICAL PANEL
- 6 GAUGE PANEL
- 7 AUTOMATIC CONDENSATE DRAIN
- 8 INLET BUFFER & VAPOR RECOVERY TANK
- 9 COMPRESSOR/MOTOR VIBRATION ISOLATION
- 10 HIGH PRESSURE DRYER (OPTIONAL)
- 11 INTERIOR LIGHTING AND INFRARED GAS DETECTOR

## BENEFITS

- › A heavy-duty, 65 dB, high performance system from BAUER that can accommodate gas utility pressures from 10-200 PSIG.
- › Standard, pre-engineered system with many customizable options.
- › Integrated CNG system, both easy and economical to install. Just connect utilities, hook up to external storage & fuel dispenser and the system is ready to fuel.
- › Attractive, state-of-the-art design suitable for placement within public view. Logo awning allows for customer branding.
- › Easy to maintain with low cost of ownership makes a BAUER compressor very economical to operate.
- › BAUER'S legendary performance, quality and reliability are backed by the best warranty in the industry.

- 12 HEAVY-DUTY INSULATED PERSONNEL DOOR
- 13 CUSTOMIZABLE LOGO AWNING (LOGO OPTIONAL)
- 14 WEATHERPROOF AND RUSTPROOF POWER-COATED GALVANNEAL ENCLOSURE (10 YEAR WARRANTY)
- 15 PRECISION FORMED AND WELDED STEEL SKID

### OPTIONAL FEATURES

- › High Pressure Drying
- › Priority Fill Panel
- › Cell Phone Modem with Remote Notification
- › Enclosure Space Heater
- › Compressor Crankcase Heater
- › Interstage Pressure and Temperature Monitoring
- › Audible Alarm

Designed in compliance with NFPA 52 and NFPA 70 Article 500 Class 1, Division 2, Group D.

((( 65 dB )))



## TECHNICAL DATA

Model	Inlet pressure		Final pressure		Capacity				Number of Stages	Running Speed	Motor			
	PSIG		BAR		CFM	M3/H	DGE/H	GGE/H			RPM	hp	kW	
	min	max	min	max										max
C23.2	10	15	0.7	1	5000	345	75	127	32	38	4	1425	50	37
C23.10	55	65	3.8	4.5	5000	345	90	153	39	45	4	1200	50	37
C23.12	115	145	8	10	5000	345	115	195	49	58	4	1200	50	37
C23.13	175	200	12	14	5000	345	125	212	54	63	4	1200	50	37

Note: All capacities are based on pipeline quality natural gas supplied at the maximum allowable inlet pressure to the compressor and 3600 psig discharge pressure. For all models lower inlet pressure is possible but with reduced capacity and possibly reduced discharge pressure. Motor power is reference to maximum allowable inlet pressure and 4500 psig discharge pressure. Consult BAUER for performance at other conditions. Performance tolerance +/- 5%

## SYSTEM FOOTPRINT

### DIMENSIONS L X W X H inches (mm)

- › 133" x 104" x 115" (3378mm x 2642mm x 2921mm)

### WEIGHT pounds (kg)

- › 10,000 lb. (4535 kg) maximum

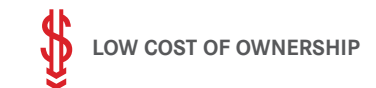
## CUSTOMER SUPPORT



GLOBAL SUPPORT



SINGLE SOURCE RESPONSIBILITY



LOW COST OF OWNERSHIP



LIFECYCLE PERFORMANCE

FOR MORE INFORMATION PLEASE VISIT:  
[www.BauerCustomerSupport.com](http://www.BauerCustomerSupport.com)

